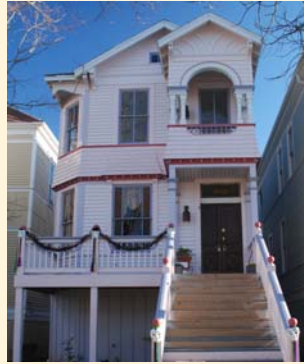


THE 36th ANNUAL
GALVESTON
Historic
HOMES TOUR
A PROJECT OF GALVESTON HISTORICAL FOUNDATION

May 1 and 2, 8 and 9, 2010 10 a.m. to 6 p.m.



SPONSORSHIP OPPORTUNITIES

35 YEARS OF PROMOTING HISTORIC GALVESTON!

In 1975, the Galveston Historic Homes Tour began during the aggressive preservation movement taking place on Galveston Island. The mission of the Galveston Historic Homes Tour is the same today as it was in 1975 - to bring awareness to the wealth of architectural and historical resources on Galveston Island; to showcase the diversity of the architectural styles and lifestyles of each historic home and its inhabitants; to encourage the purchase and revitalization of historic homes; and to benefit the programs and projects of Galveston Historical Foundation (GHF). Over the years, the Homes Tour has served as an effective catalyst for the wide-spread restoration efforts of historic Galveston, and today, is the second largest fundraising event for GHF, a 501 (c)(3) non-profit organization. The mission of GHF is *"to preserve and revitalize the architectural, cultural and maritime heritage of Galveston Island for the education and enrichment of all."* There could be no truer evidence of this mission than the Galveston Historic Homes Tour.

In the over three decades the tour has been in place, more than 300 properties have been featured, some more than once. From humble cottages to grand mansions, loft conversions in commercial buildings to unique adaptations of corner grocery stores and fire houses, the Island's diverse architecture has been highlighted for the enjoyment of thousands of annual tour visitors. One of the most unusual aspects of the tour is, for the most part, these are privately owned homes that owners have opened their doors for visitors to get a first-hand look at how innovative, comfortable and "livable" historic structures can be. Also, each year patrons are treated to a "restoration in progress" property, giving a "behind the plaster" look at what is entailed in the rehabilitation or restoration of a historic structure. Many times these properties are featured on subsequent tours giving a unique before and after perspective.

GHF doesn't accomplish this feat alone. Thousands of hours are logged by hundreds of dedicated volunteers, acting as tour guides and ticket sellers, who believe in GHF's efforts and have a heartfelt want to inform and promote the Island's distinct history and architecture. Each year dozens of corporations, businesses and individuals support the annual tour through invaluable monetary and in-kind sponsorship. In-kind backing by local and national media enables GHF to publicize this favorite springtime annual event, always held the first two weekends in May.



SPONSORSHIP BENEFIT DETAILS

QUEEN ANNE SPONSORSHIP LEVEL: \$7,500

At the Queen Anne sponsorship level, receive logo inclusion on signage at the 'cover' home (Location to be determined. Signage is implemented by GHF.), on the Galveston Historic Homes Tour tickets, on the Galveston Historic Homes Tour paid and trade print advertising campaign*: on 100,000 Galveston Historic Homes Tour advertising brochures* distributed throughout Texas with an emphasis on Southeast Texas, especially the Houston-Galveston metropolitan area, Galveston Historical Foundation's tourism partners, retail outlets of participating Galveston Historic Homes Tour sponsorship partners (subject to availability), and all members of Galveston Historical Foundation's query database of over 30,000 direct mail recipients, on 500 Galveston Historic Homes Tour advertising broadsides* distributed throughout the Houston-Galveston metropolitan area, and in 5,000 award-winning commemorative Galveston Historic Homes Tour catalogs*, with prominent placement on the back cover of the catalog. Also, receive logo inclusion and hyperlink on the official Galveston Historical Foundation/Galveston Historic Homes Tour website. Additionally, receive twenty-two (22) complimentary tickets to the Galveston Historic Homes Tour and four (4) complimentary tickets to the Preview Evening Tour on April 30, 2010.

GREEK REVIVAL SPONSORSHIP LEVEL: \$5,000

At the Greek Revival sponsorship level, receive logo inclusion on signage at the 'cover' home (Location to be determined. Signage is implemented by GHF.), on the Galveston Historic Homes Tour paid and trade print advertising campaign*: on 100,000 Galveston Historic Homes Tour advertising brochures* distributed throughout Texas, on Galveston Historic Homes Tour tickets*, on 500 Galveston Historic Homes Tour advertising broadsides* distributed throughout the Houston-Galveston metropolitan area, and in 5,000 award-winning commemorative Galveston Historic Homes Tour catalogs*, with prominent placement on the back cover of the catalog. Also, receive logo inclusion and hyperlink on the official Galveston Historical Foundation/Galveston Historic Homes Tour website. Additionally, receive eighteen (18) complimentary tickets to the Galveston Historic Homes Tour and two (2) complimentary tickets to the Preview Evening Tour on April 30, 2010.

ITALIANATE SPONSORSHIP LEVEL: \$2,500

At the Italianate sponsorship level, receive logo inclusion on signage at the 'cover' home (Location to be determined. Signage is implemented by GHF.), on the Galveston Historic Homes Tour paid and trade print advertising campaign*: on 100,000 Galveston Historic Homes Tour advertising brochures* distributed throughout Texas, and in 5,000 award-winning commemorative Galveston Historic Homes Tour catalogs*, with prominent placement on the back cover of the catalog. Also, receive logo inclusion and hyperlink on the official Galveston Historical Foundation/Galveston Historic Homes Tour website. Additionally, receive fourteen (14) complimentary tickets to the Galveston Historic Homes Tour.

CRAFTSMAN SPONSORSHIP LEVEL: \$1,000

At the Craftsman sponsorship level, receive logo inclusion in 5,000 award-winning commemorative Galveston Historic Homes Tour catalogs*, with prominent placement on the back cover of the catalog, and on the official Galveston Historical Foundation/Galveston Historic Homes Tour website. Additionally, receive ten (10) complimentary tickets to the Galveston Historic Homes Tour.

EASTLAKE SPONSORSHIP LEVEL: \$500

At the Eastlake sponsorship level, receive logo inclusion in 5,000 award-winning commemorative Galveston Historic Homes Tour catalogs*, with prominent placement on the back cover of the catalog, and on the official Galveston Historical Foundation/Galveston Historic Homes Tour website. Additionally, receive six (6) complimentary tickets to the Galveston Historic Homes Tour.

SOUTHERN TOWNHOUSE SPONSORSHIP LEVEL: \$250

At the Southern Townhouse sponsorship level, receive logo inclusion in 5,000 award-winning commemorative Galveston Historic Homes Tour catalogs*, with prominent placement on the back cover of the catalog, and on the official Galveston Historical Foundation/Galveston Historic Homes Tour website. Additionally, receive four (4) complimentary tickets to the Galveston Historic Homes Tour.

**Inclusion in printed materials subject to print proof deadlines and date of sponsorship agreement.*

BENEFITS AT-A-GLANCE

2010 Benefits	Queen Anne \$7,500	Greek Revival \$5,000	Italianate \$2,500	Craftsman \$1,000	Eastlake \$500	Southern Townhouse \$250
Inclusion in all Pre-Event Advertising	X	X	X			
Company Logo in Event Catalogue	X	X	X	X	X	X
Company Logo on Event Posters	X	X				
Company Logo on Homes Tour Tickets	X	X				
Company Logo on Event Brochures	X	X	X			
Company Logo on Event Website	X	X	X	X	X	X
Recognition at Homes Tour						
Logo on the 'cover' home signage	X	X	X			
Company Participation						
Complimentary Tickets to Homes Tour	22	18	14	10	6	4
Complimentary Tickets to Preview Evening Tour	4	2				

Sample Sponsorship Collaterals: (from left) 2009 poster, 2009 Texas Monthly advertisement, 2009 brochure cover and sponsor page

The 35th ANNUAL GALVESTON Historic HOMES TOUR

May 2 & 3, 9 & 10, 2009 10 a.m. to 6 p.m.

CELEBRATING HISTORIC GALVESTON'S REBIRTH

Special Events Both Weekends!

Tickets: call 1-877-77CLICK • www.galvestonhistory.org

A PROJECT OF GALVESTON HISTORICAL FOUNDATION

GALVESTON HISTORICAL FOUNDATION PRESENTS THE 35TH ANNUAL GALVESTON Historic HOMES TOUR

Celebrating Historic Galveston's Rebirth Saturdays and Sundays, May 2 & 3 and 9 & 10, 2009 10 a.m. to 6 p.m.

Special Events Both Weekends

Tickets: www.galvestonhistory.org or call 1-877-77CLICK

A PROJECT OF GALVESTON HISTORICAL FOUNDATION

THE 35TH ANNUAL GALVESTON Historic HOMES TOUR

May 2 & 3 and 9 & 10, 2009 • 10 a.m. to 6 p.m.

Special Events Both Weekends!

Celebrating Historic Galveston's Rebirth

A PROJECT OF GALVESTON HISTORICAL FOUNDATION

Sponsors

QUEEN ANNE Mitchell Historic Properties galveston.com & COMPANY

SOUTHWEST.COM Official Airline of Galveston Historic Homes Tour

THE DAILY NEWS Community Life. Reported Daily

HOUSTON CHRONICLE TexasMonthly

Right Store. Kroger Right Price.

STANDARD Renewable Energy

house + home

THE PARROT

BUZZ

GREEK REVIVAL

The Robert Knox Sr. and Pearl Wallis Knox Foundation

ITALIANATE

JPS Contractor

SAND BY SEA

The Trube Foundation

abOUT

Tickets: call 1-877-77CLICK

The 36th ANNUAL
GALVESTON
Historic
HOMES TOUR
 A PROJECT OF GALVESTON HISTORICAL FOUNDATION

SPONSORSHIP AGREEMENT

Please complete, sign and return this form to the address below with your camera-ready company logo, if applicable, by March 1, 2010.

- | | | | |
|--|---------|--|---------|
| <input type="checkbox"/> QUEEN ANNE | \$7,500 | <input type="checkbox"/> CRAFTSMAN | \$1,000 |
| <input type="checkbox"/> GREEK REVIVAL | \$5,000 | <input type="checkbox"/> EASTLAKE | \$500 |
| <input type="checkbox"/> ITALIANATE | \$2,500 | <input type="checkbox"/> SOUTHERN TOWNHOME | \$250 |

IN-KIND SPONSORSHIP OF _____ EQUALING \$ _____

I'm unable to sponsor but would like to make a donation in the amount of \$ _____

This agreement is made between Galveston Historical Foundation (GHF) and: _____ hereinafter referred to as "sponsor" and dated this _____ day of _____, 2010. GHF agrees to provide the aforementioned benefits, as outlined on the benefits page of the sponsorship package, in return for the monetary or in-kind sponsorship checked or stated above.

SPONSOR:

By: _____

Signature: _____

Title: _____

Address: _____

GHF:

By: _____

Signature: _____

Title: _____

502 20th Street

Galveston, Texas 77550-2014

Payment:

Make checks payable to GHF

Credit Card: Type _____, Number _____, Exp _____